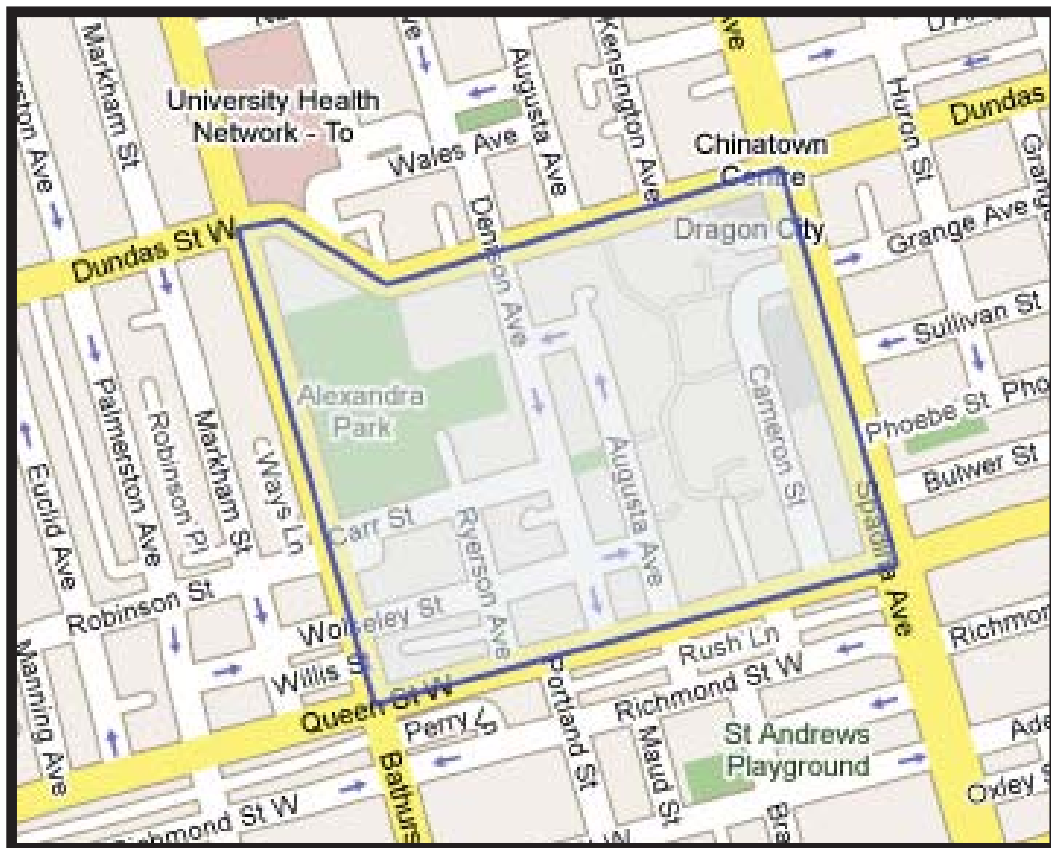


Toronto Neighbourhoods

Alexandra Park



Slavens & Associates Real Estate Inc., Brokerage
435 Eglinton Avenue West
Toronto, Ontario M5N 1A4
Off. 416.483.4337
Fax. 416.483.1663
www.SlavensRealEstate.com

AREA SCHOOLS

Elementary Schools

Ryerson Community School

96 Denison Ave
416-393-1340
Ryerson@Tdsb.On.Ca
<http://schools.tdsb.on.ca/ryersoncommunity>

Ecole Saint-Noel Chabanel

1300 Ave Wilson
416-393-5321

Ogden Jr School

33 Phoebe St
416-393-9110
ogden@tdsb.on.ca

Alpha Alternative School

20 Brant St
416-393-1880
alpha@tdsb.on.ca

St Mary School

20 Portugal Square
416-393-5205

Charles G Fraser Jr School

79 Manning Ave
416-393-1830
charlesgfraser@tdsb.on.ca
<http://schools.tdsb.on.ca/charlesgfraser/>

Kensington Community School

401 College St
416-393-1290
kensington@tdsb.on.ca

Niagara Street Jr School

222 Niagara St
416-393-1371
Niagara@tdsb.on.ca

Secondary Schools

Oasis Alternative Secondary School

20 Brant St 3rd Floor
416-393-9830
oasis@tdsb.on.ca

Horizon Alternative School

401 College St
416-393-1298
horizon@tdsb.on.ca

Heydon Park Secondary School

70 D'arcy St
416-393-1710
heydonpark@tdsb.on.ca
<http://schools.tdsb.on.ca/heydonpark>

Subway Academy II

64 Baldwin St
416-393-1445
subwayacademy2@tdsb.on.ca

Alternative School

132 St Patrick St
416-393-1455

Harbord Collegiate Institute

286 Harbord St
416-393-1650
harbord@tdsb.on.ca
<http://schools.tdsb.on.ca/harbordci/>

Delta Senior Alternative School

301 Montrose Ave
416-393-9730
delta@tdsb.on.ca

OVERVIEW

Avg. Household Income: \$69,834.00
 Provincial Average: \$66,836.00

Percent of Immigrants: 44.77%
 Provincial Average: 26.85%

Average Number of Kids: .9
 Provincial Average: 1.2

Percent of Low Income: 23.80%
 Provincial Average: 14.40%

Average Home Price: \$ 350,342.00
 Average # of Bedrooms: 3
 Common House Style: Apartment

Average Property Taxes: \$2,373.00
 Common Housing Type: Condo Apt

Housing

Home Ownership: Rented
 Period of Construction: Before 1946

People

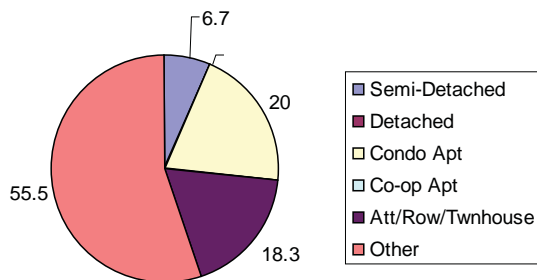
Population Age: 20-29, 30-39
 Marital Status: Single

Work Life

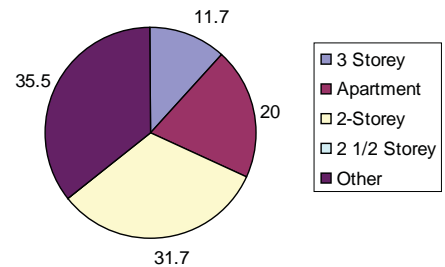
Mode of Transportation: Public Transportation, Car, Walk
 Occupation: Sales & Services; Business, Finance & Administration; Management

Source: Demographic information comes from data in the 2001 Canadian Census. Demographic information for this neighbourhood is based on data for the Trinity-Spadina Federal Electoral District. Neighbourhood boundaries may differ from those of Federal Electoral Districts.

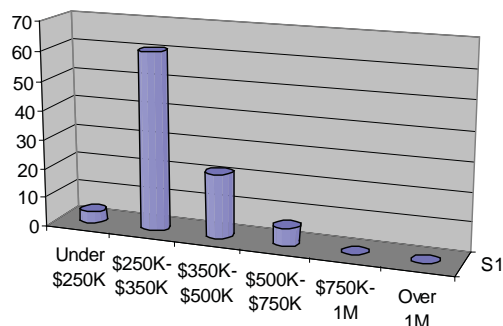
Percent of Homes by Housing Type - Alexandra Park



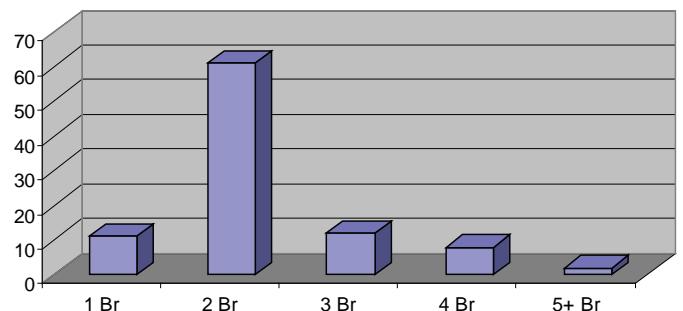
Percent of Homes by House Style - Alexandra Park



Percent of Homes by Price Sold - Alexandra Park



Percent of Homes by Number of Bedrooms - Alexandra Park



NEIGHBOURHOOD DESCRIPTION

Alexandra Park's history revolves around Sir Casimir Gzowski, a Polish engineer who immigrated to Toronto in 1841. Gzowski's distinguished career included the building of the Grand Trunk Railway from Toronto to Sarnia.

The Gzowski residence stood at the south-east corner of Bathurst and Dundas Streets. This former Toronto landmark was known simply as "The Hall". In 1904, the City of Toronto purchased "The Hall" and its environs for use as a public park. This park was named Alexandra Park after Queen Alexandra.

The Alexandra Park neighbourhood has been the first home for many new Canadians. In the 1920's and 30's large numbers of Polish and Ukrainian immigrants settled here. They were soon followed by immigrants from Germany, Italy, Greece, Portugal and Hungary.

In 1964 Toronto City council approved plans for the Alexandra Park Housing Cooperative. This led to the expropriation of sixteen acres of private property and the subsequent demolition of many Alexandra Park houses. Today the Alexandra Park Housing Cooperative forms a vital part of this inner city neighbourhood.

Alexandra Park has two distinct communities that are literally intertwined within the streets of this neighbourhood. The old section of Alexandra Park consists of privately owned residences, while the newer sections of the neighbourhood are part of the Alexandra Park Cooperative, which provides partially subsidized housing.

This mix of private and public housing in Alexandra Park seems to work, as both old and new complement each other in this small downtown Toronto neighbourhood.

Alexandra Park is the primary greenspace in this neighbourhood. It has an outdoor pool, a wading pool, an artificial ice rink and tennis courts. Next to the park is the Scadding Court Community Centre. Scadding Court's facilities include a gymnasium, an indoor pool, a weight room, and meeting rooms. Adjacent to the community centre is the Charles R. Sanderson Public Library, which offers programs for adults, children and preschoolers.